

MONTHLY MEMBERSHIP PROGRESS REPORT

District 321B1

Results as of: 5/31/2026

GMT:

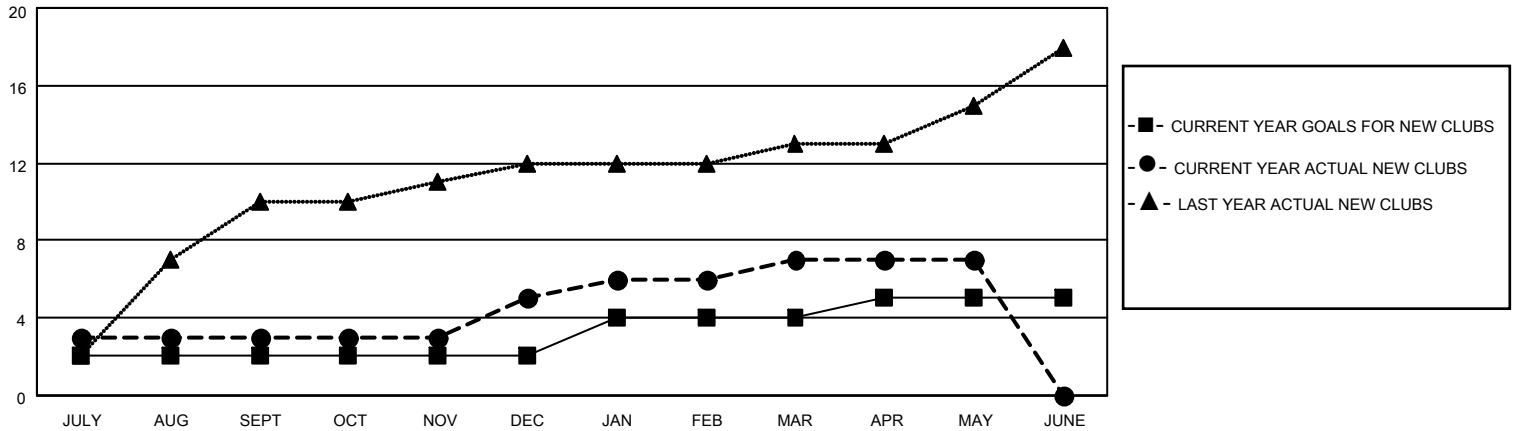
LOCATION INDIA

GMT CA

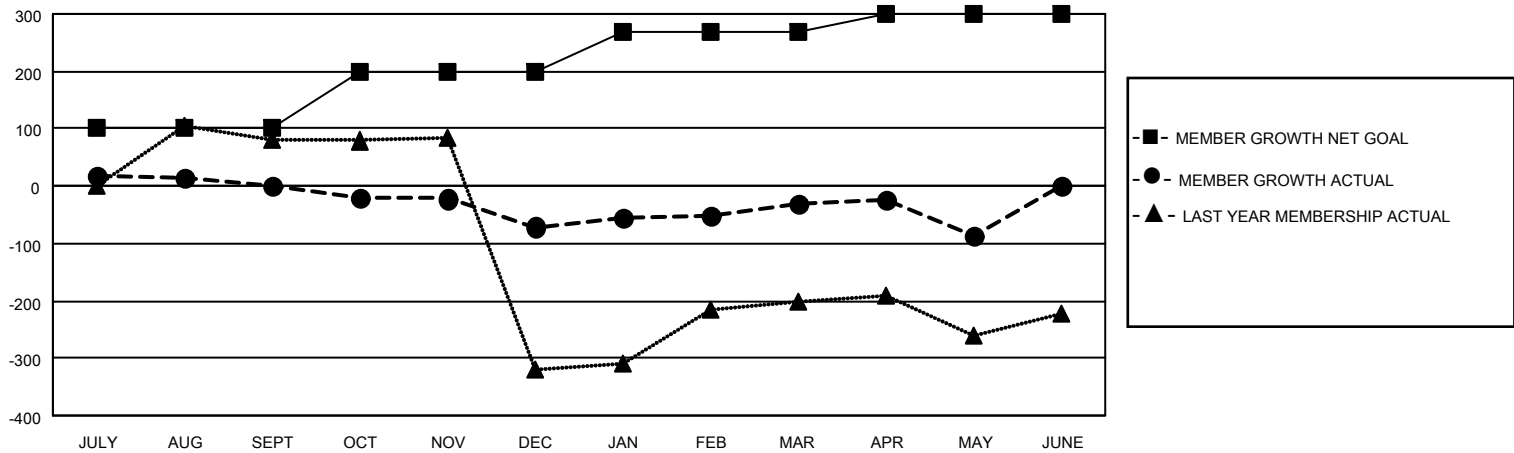
Clubs			
RESULTS FOR 2025-2026			
QUARTER	NEW CLUB GOAL	NEW CLUBS	DROPPED CLUBS
JULY/AUG/SEPT	2	3	1
OCT/NOV/DEC	0	2	3
JAN/FEB/MAR	2	2	1
APR/MAY/JUNE	1	0	0

Members			
RESULTS FOR 2025-2026			
QUARTER	MEMBER GROWTH NET GOAL	MEMBER GROWTH ACTUAL	DROPPED MEMBERS ACTUAL (including transfers)
JULY/AUG/SEPT	100	208	163
OCT/NOV/DEC	100	261	300
JAN/FEB/MAR	70	66	26
APR/MAY/JUNE	30	131	97

GOALS AND ACTUAL NEW CLUBS CUMULATIVE



GOALS AND ACTUAL MEMBERS CUMULATIVE



DROPPED CLUBS: 5	85 CLUBS OF 108 ADDED 1 OR MORE NEW MEMBERS	GENDER DISTRIBUTION	
		MALE 1,694 (60.63%)	FEMALE 1,098 (39.30%)
DROPPED MEMBERS		CLICK HERE FOR CUMULATIVE MEMBERSHIP DATA	TOTAL FAMILY UNIT MEMBERS 890
DECEASED 6	CLUB CANCELLED 156		FAMILY MEMBERS PAYING HALF DUES 486
OTHER 424	TOTAL 586		